



PRODUCT CATALOG

OneGauge is a DIY style digital gauge system that supplies customers with products that can work any vehicle and on any engine. Our products have been installed in everything from race cars to off-road buggies, tractors to snowplows, and in industrial and engine testing applications. With options to suit a huge variety of budgets and needs, we work with our customers directly to build bespoke gauges that fit your vehicle and provide all the gauge readings you need to protect your engine. We have shipped hundreds of units all over the world but are a growing business, so check back often for updates and new features!

We pride ourselves on having the best customer service and support and work tirelessly to ensure our customers are happy with our products. To reach us directly, please email us at Info@TheOneGauge.com.

**See product demos, photos,
installation information, and more:**

TheOneGauge.com

[Facebook.com/OneGauge](https://www.facebook.com/OneGauge)

YouTube: <https://bit.ly/3DtBz6c>

The OneGauge Hub



The OneGauge Hub is the “brain” every product and is the central connection point for screens and sensors.

Every OneGauge Hub includes the following:

- 12-16v+ power input
- Bluetooth connection to an Android Device
- 6 analog inputs (typically 3 analog temp sensors, 2 fuel level sensors, and 1 analog pressure sensor)
- 5 digital pressure sensor inputs (including vacuum/boost)
- 2 oxygen sensor inputs
- 3 voltage inputs
- 2 Tachometer/Digital Speedometer inputs
- 4 digital temperature inputs
- 5 indicator inputs, including turn signals

All of these can be custom configured when order to suit your needs, with options to add additional sensor inputs if required!

Input Options



There's a way to make OneGauge systems work in any vehicle or with any engine. We have three primary options:

- Standard automotive-grade sensors can provide readings for just about any temperature, pressure, or other gauge you need. These sensors install on the engine, just like factory senders, are extremely durable, and provide instant communication to the Hub. You can use these in conjunction with OBD-II or Can-Bus systems listed below to add sensor readings that are unavailable from those setups.
- OBD-II systems are available for all 1996+ vehicles. This system works best in engines made after 2008 (and some before 2008!) due to a much faster connection speed than OBD systems in 1996-2008 vehicles.
- CAN-BUS communication is available for aftermarket ECUs and fuel injections systems. Some brands we support include Holley EFI systems, Edelbrock Pro-Flow, Megasquirt, Haltech, and many more.

Phone/Tablet Setups



All OneGauge systems include a Bluetooth connection to an Android phone, tablet, or head-unit using either the Torque Pro or RealDash apps.

Some features include:

- Easy mounting and install (no dash modification required)
- Our most inexpensive screen solution
- Datalogging
- Custom dash design and modifications on the fly
- Camera integration for dash-cam videos
- Removable or adjustable

OneGauge can be connected to a Bluetooth device at the same time as any of our other screens.

The only downside to phone/tablet setups is the need to power up the device and open the app to view your gauges. For permanent installations, we typically recommend OneGauge LCD screens.

OneGauge LCD Screens



OneGauge LCD touchscreens come in a variety of sizes (typically 5", 7", and 10") and allow you to permanently mount a screen in your dash or elsewhere in your vehicle.

- Totally custom designs available (30+ included by default)
- Adjustable brightness, with high brightness versions available for convertibles or high-sunlight applications
- Many menus to setup basic functions of the gauges, such as fuel settings, gear calculations, and more
- Ability to design your own gauges on a computer and upload to the screen- share designs with other customers!
- Huge variety of mounting options available
- For dimensions and mounting templates, please see TheOneGauge.com/Features

Widescreen LCDs



By partnering with **PiDashes.com**, we offer a variety of widescreen sizes to fit any dash!

- Design your own gauge layout on the screen itself
- Integrate back-up cameras, music, and other features
- Variety of shapes and sizes available- please visit PiDashes.com or reach out to discuss options that are best for your vehicle.

Other OneGauge Features

OneGauge offers a nearly limitless variety of features that are available in addition to the standard OneGauge Hub setup. Some of these include:

- Tire pressure and temperature monitoring system with screw-on or in-tire mounting options
- Relays or on-screen buttons to control vehicle electronics or accessories such as lights, fans, a shift light, and much more
- High temperature sensors for EGTs or other extreme temperature applications
- Odometer and hour-meter options
- Accelerometer for vehicle roll/tilt and g-force measurement
- Multiple GPS speedometer options for easy installation
- Lap, 1/4-mile, 1/8-mile, and 0-60 timing options
- Gear calculations to provide current gear of any transmission
- Datalogging
- LED lights for shifting, warning indicators, and more
- Buzzer or sound options for sensor warnings

And more! If you have an idea for something, we can almost certainly make it happen!

Vehicle Specific Mounting Options

We partner with several cluster manufacturers to make easy to install, professional quality instrument clusters made to fit our screens. For a current list of available clusters by vehicle, please visit our store page: TheOneGauge.com/Buy



3D Printed Clusters



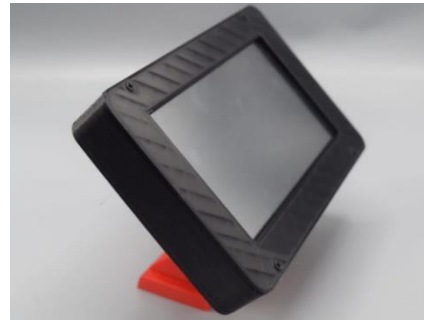
Metal Clusters



Full Dash Replacements

Other OneGauge Screen Mounting Options

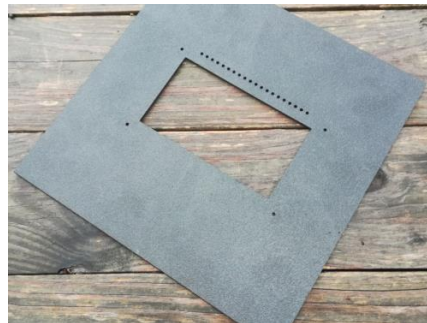
There are a variety of ways to mount our standard LCD screens.



Universal Mounts for 7" and 10" Screens




Ready-To-Mount (RTM) 5" and 7" Enclosures



Blank pre-cut ABS plastic bezels for 7" and 10" Screens

PRODUCT <i>CLICK FOR LINK</i>	PRICE <i>(USD)</i>	DETAILS
OneGauge Hub	\$400	Fully Assembled; U.S. Shipping included; International Shipping extra <i>The "brain" of OneGauge and required for all builds; for a features list see TheOneGauge.com/Features</i>
Standard LCD Screens		<i>For LCD Screen Dimensions, see TheOneGauge.com/FAQs Other Screen sizes, shapes, and more are available upon request</i>
7" Nextion LCD Screen	\$250	Touchscreen LCD, includes all standard OneGauge designs and layouts
7" Nextion with RTM Kit	\$300	7" Screen with "Ready to Mount" enclosure. Also available with SuperBright
10" Nextion Screen	\$350	Touchscreen LCD, includes all standard OneGauge designs and layouts
5" Nextion LCD Screen	\$200	Touchscreen LCD, may require custom design (see below), RTM option +\$50
7" Nextion SuperBright Screen	\$400	Recommended for high sunlight applications (convertibles, boats, etc.)
7" or 10" Pre Cut Bezel (12")	\$75	Pre-cut 12"x12" ABS plastic panel, 1/8" thick, for building a custom dash
7" or 10" Pre Cut Bezel (24")	\$100	Pre-cut 12"x24" ABS plastic panel, 1/8" thick, for building a custom dash
7" LCD Housing & Mount Kit	\$125	Provides an enclosure and mount for the Nextion 7" Screen
10" LCD Housing & Mount Kit	\$125	Provides an enclosure and mount for the Nextion 10" Screen
Input Options		<i>Please contact OneGauge to confirm compatibility before purchase</i>
OBD-II Input (Wireless)	\$100	For pre-2008 vehicles (in U.S.A.); connects to factory OBD-II port
OBD-II Input (Wired)	\$100	For 2008+ vehicles (in U.S.A.) or any ISO-15765-4 protocol vehicle – provides faster sensor readings; works with some pre-2008 vehicles
CAN-BUS	\$100	For standalone or aftermarket ECU's with CAN-BUS output
Holley EFI Plug and Play	\$150	Communicates with any Holley EFI system, plug and play connector included
Fitech Plug and Play	\$150	Communicates with Fitech ECUs, plug and play connector included
Additional Options		
GPS Speedometer	\$50	Standard GPS speedometer and antenna; updates 5x/second
Upgraded GPS Speedometer	\$150	Provides faster GPS updates and higher accuracy
Odometer	\$50	Records vehicle mileage, hours, and saves some sensor readings for recall
Accelerometer	\$50	Provides vehicle roll/tilt and g-force readings
SD Card Data Logging	\$75	Save selected sensor data to an SD card for analysis; includes microSD card
TPMS System	\$200	Reads pressure and temp of 4 tires; screw on or valve stem sensors Additional systems available for up to 20 tires (please request quote)
Additional Android Output	\$50	Allows connection to 2 nd Android phone/tablet using Torque or RealDash
Electronic Relays - Control vehicle electronics using on-screen buttons		
2x 10amp	\$40	<i>All relays can be configured to automatically switch on in order to control fans, fuel pumps, etc. Cases available for 10amp relays upon request.</i>
4x 10amp	\$75	
8x 10amp	\$150	
12x 10amp	\$250	
4x 30amp	\$100	
Proximity Sensors	TBD	Detect proximity or distance to an object; contact for information
GPS-based security	TBD	Send your vehicle's location if the vehicle is stolen; contact for information
CAN-BUS output	TBD	Sends data to an accessory to broadcast or record sensor data
Custom Services		<i>Please contact to inquire about custom services</i>
Custom Screen Design	\$50/hr	Fees for making custom screens or significant modifications to current screens
Custom Cluster Fabrication	\$50/hr	Fees for building a custom instrument cluster

SENSOR - CLICK FOR LINK	PRICE	SIZE	DETAILS
Analog Temperature Sensors:			
Generic Temp Sensor	\$25	1/8" NPT	Analog Sensor, 1-wire, up to 225F
Standard Motor Products TS58	\$30	3/8" NPT	Analog Sensor, 1-wire, up to 225F
Autometer 2258, 2259, or 2385	\$40	1/8" NPT	Analog Sensor, 1-wire, up to 300+F
Standard Motor Products TS75	\$30	1/4" NPT	Analog Sensor, 1-wire, up to 225F
Digital Temperature Sensors:			
Digital Temp, Unthreaded (DS18B20)	\$10	1/8" diam.	Probe sensor for air temperature
Digital Temp, Threaded (DS18B20)	\$35	1/4" NPT	Threaded Digital Temp sensor up to 225F
High Temperature EGT Sensors, Pyrometer, Cylinder Head Temp	\$50	1/8" NPT	K-type thermocouple sensor for temps up to 1800F; other sizes available upon request; bulk discount available when 4+ are purchased
Pressure Sensors:			
Standard Motor Products PS60T (Analog)	\$30	1/4" NPT	Analog oil pressure, 1-wire, up to 100 psi
3 Bar Vacuum/Boost Pressure	\$30	1/8" Barb	Up to 30PSI, use "GM Style 3 bar MAP sensor"
"Value" Digital Pressure Sensors 	\$50	1/8" NPT	Digital pressure sensors, do not include warranty. Best used for air pressure but usually hold up well for Fuel/Oil. Various PSI ratings available.
LowDoller Motorsports Pressure Sensors	\$75	1/8" NPT	100, 150, 200, 300, and 500 PSI ratings available
LowDoller Motorsports Pressure Sensors	\$100	1/8" NPT	15, 25, 50, and 75 PSI ratings available
Heavy Duty Pressure Sensors	TBD	1/4" NPT	Pricing varies by PSI rating and brand
Digital Pressure Sensor Harnesses			Included with sensor purchase from OneGauge; required for all digital pressure sensors
Combination Temp and Pressure Sensors:			
100 PSI/500F Digital Sensor	\$150	1/8" NPT	Reads both temp and pressure
300 PSI/500F Digital Sensor	\$150	1/8" NPT	Reads both temp and pressure
Tachometer and Speed Sensors:			Please review this doc before purchase
Universal Tachometer Adapter	\$100		Recommended for gasoline applications
Dakota Digital SGI-100BT	\$150		For gas or diesel with an existing tach signal source
Autometer 9112 Tach Adapter	TBD		Uses an alternator pickup for tach signal
ZF Electronics GS 100701	\$75		Speed or tachometer hall-effect pickup
Oxygen (AFR/Lambda) Sensors:			
Innovate Motorsports LC-2	\$200		All oxygen sensors require a controller with 0-5v analog output. Different controllers offer different features, so shop around and compare for the best sensor for your application. OneGauge is compatible with all controllers listed here; all are available for sale upon request.
Spartan Oxygen Controller	\$175		
Wide-Band WB-1	-		
Daytona	-		
Ballenger	-		
LD Performance Wideband O2 Controller	-		
AEM 30-0300 Wideband	-		
Other Sensors:			
Infrared temperature sensors	-		Available upon request
Liquid/Fuel flow and Ethanol Content	-		Available upon request
Throttle or Brake Position	-		Available upon request
Wiring Extensions:			
Per wire, per foot extension:	\$0.50/ft	\$5 minimum	<i>Sensors and screens include 4-6 ft (1.5-2m) wiring standard (not guaranteed).</i>
Heat shrink sheathing	\$1/ft	\$5 min.	<i>Wiring sheathed in heat shrink</i>

FREQUENTLY ASKED QUESTIONS:

INSTRUCTIONS AND OTHER KEY DOCUMENTATION CAN BE FOUND AT THEONEGAUGE.COM/FAQS

- **How long will it take to get my setup?**
 - Phone/tablet setups are typically ready to ship in 3 weeks or less, single screen LCD setups in 3-4 weeks, and custom or multi-screen setups in 4-6 weeks. Shipping is free in the United States and typically takes 3-4 business days. Each OneGauge purchase is assembled by hand and every component is tested thoroughly, so if you are in a rush please let us know well in advance and plan your purchase with time to spare. *Rush orders incur fees of 10-20% or more. No guarantees are made on production time and time often depends on material availability as well as order complexity.*
- **What's the difference between analog and digital sensors?**
 - Analog sensors are less accurate (usually with 5-10 degrees Fahrenheit/PSI or less) but are very durable and are not sensitive to electronic interference. Digital sensors are more accurate (usually within 1-2 degrees Fahrenheit/PSI or less) but are sensitive to electronic interference; most vehicles have no trouble with interference but proper grounding and distance from high-noise components like spark plug wires is important.
- **What's the difference between 1-wire and 2-wire sensors?**
 - 2-wire sensors have an additional ground wire that must be installed. 1-wire sensors ground through the threads of the sensor so the threads must be clean when installed (no Teflon tape).
- **Can I add sensors to a OBD-II or CAN BUS setup?**
 - Absolutely! You can add the same sensors as a standard setup.
- **Can I add sensors later or move the setup to another vehicle?**
 - For sure. You can add sensors anytime, just use our instructions available at TheOneGauge.com/FAQs to make sure you install the wiring the correct screw terminals. Note that LCD screen designs may need modification if you are adding or removing a new sensor.
- **I can get these sensors cheaper on other websites. Why buy from OneGauge?**
 - That's right! Our sensors are wired, tested, and ready to install. Our prices take this into account, as well as the time involved in installing and testing each sensor. We also offer a 90-day guarantee on most sensors (except "Value" digital pressure sensors). However, we highly encourage budget or DIY-minded customers to wire and purchase their sensors themselves to save money if they choose!
- **Which OBD-II setup do I need – wired or wireless?**
 - Vehicles made in the United States starting in 1996 have OBD-II ports. Direct or Wired OBD-II connections require ISO15765-4 (CAN-BUS) in your vehicle. All vehicles manufactured in the United States from 2008 on have this capability. To check older vehicles, use this website. <https://obdstation.com/obd2-protocols/>
- **Will my standalone ECU work with OneGauge?**
 - CAN BUS input: standalone or aftermarket engine computers with CAN BUS output are supported by OneGauge if they offer one of the following two options:
 - Customizable CAN-BUS configuration that allows you to define the parameters and protocol of your ECU's CAN BUS output
 - Available CAN-BUS protocol from the manufacturer so OneGauge can be programmed to communicate with your ECU (additional programming fees may be required)
 - Our setup is so far confirmed to work with Haltech, MaxxECu, and more!
- **Do you include adapters or fittings in the price of sensors?**
 - No, fittings and adapters are not included. However, if you are purchasing from overseas, need metric fittings or sensors, or need a unique adapter or fitting, we can often help. Feel free to reach out with any questions- Info@TheOneGauge.com. Glowshiftdirect.com is a great resource for a variety of fittings and adapters, including oil pan plug adapter kits for adding sensors, sensor relocation kits, threaded adapters, tee fittings, and more.